

**FIELD INSTALLATION INSTRUCTIONS**

TITLE:	DUCT CONNECTION
NAME:	FII-010
ISSUE DATE:	19 Mar 2013
REVISION:	1

**PURPOSE:**

The intention of this FII is to demonstrate the connection of two FrostFighter ducts.

**PROCEDURE:**



Step 1: Locate the two ducts to be joined.



Step 2: Locate the Wire Ring End of one duct (approx. 3/8 diameter)

**FIELD INSTALLATION INSTRUCTIONS**

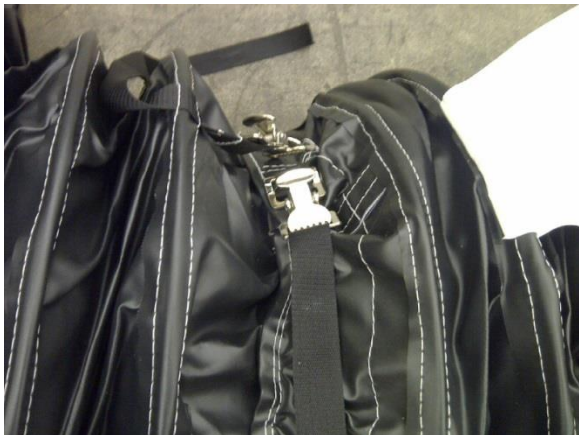
TITLE:	DUCT CONNECTION
NAME:	FII-010
ISSUE DATE:	19 Mar 2013
REVISION:	1



Step 3: Locate the belt end of the other duct.



Step 4: Slide the belt end over the ring end.



Step 5: Tighten the belt.